

Battery optimization

BESS evolution and what the Italian market can learn from the German market

Nurturing revenue for BESS owners with our proprietary,
AI-based, self-learning optimization platform.

Why enspired?



Innovative company
shaping the market since
day one



Industry-defining
technology running on
in-house expertise



Passionate team
leveraging decade-long
active experience

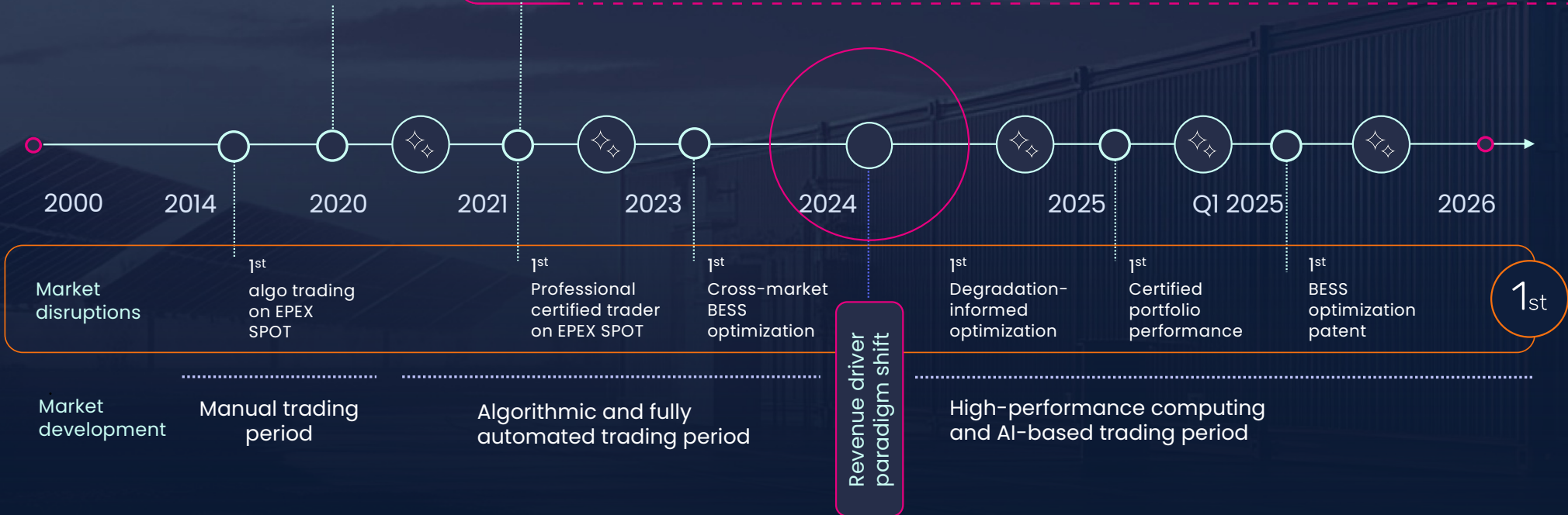


Founded 01/2020
by industry experts
with algo trading
breakthroughs since 2014



Unique high-performing optimization platform

fully automated · digital · integrated · 100% in-house · self-learning with AI/ML · 24/7 access
to live trading dashboard



5.000+ MW

assets under
management

Future markets

Japan, Italy, Romania,
Bulgaria, Baltics

1.300+ MW

2.500+ MWh BESS under
management

100+ employees

with market, trading, tech, and
data science backgrounds

400+ MW

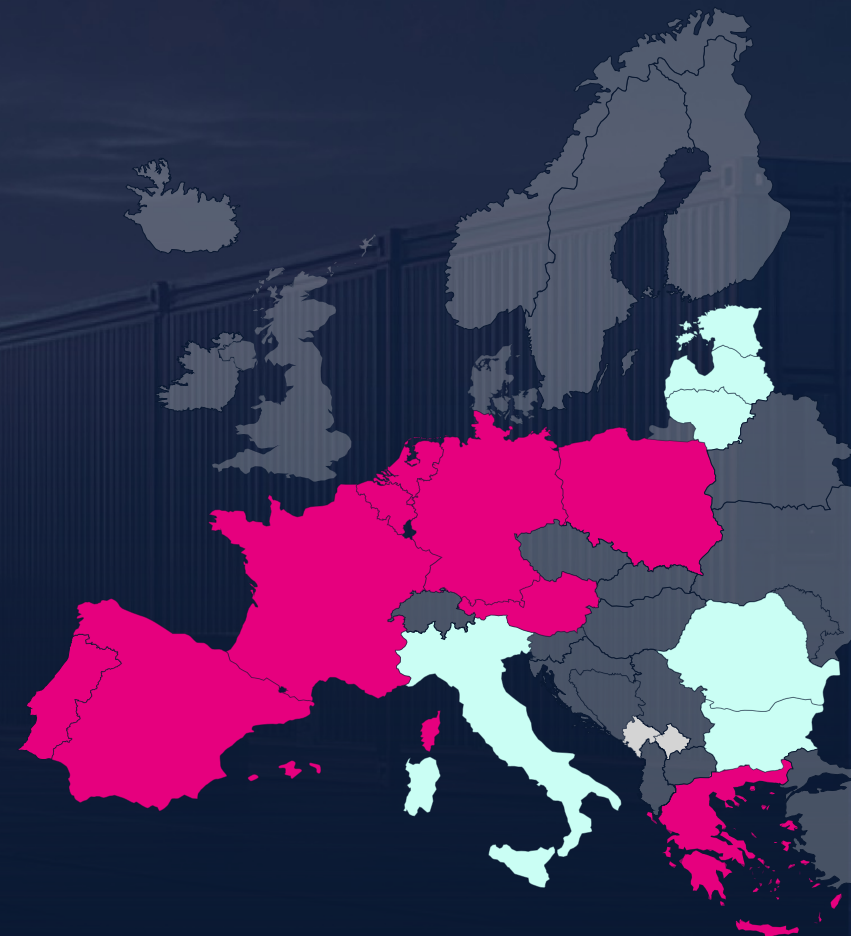
BESS in operation

Market evolution

with regulations and balancing

First and only optimizer
with **2h+ BESS** in Germany
in full cross-market setup.

Optimizer of the biggest BESS
in continental Europe with
103.5 MW/230 MWh.



Our unique revenue optimization system

Our advanced AI/ML single source in-house platform



Revenue impact factors

- Cross-market data access
- Trading potential
- Flexible trading opportunities
- Wholesale pricing
- Renewable plant performances
- Grid frequency
- Weather forecast
- BESS capacity and performance
- Warranty terms
- Contract requirements



Patented BESS solver
Fully digital in-house platform
Self-learning AI/ML

10 bn+
data points

€50+ mio.
invested

150+
person-years

KPMG-certified
performance

A true partner for every stage of your project



Feasibility study

Expert market knowledge
High-quality backtests
Certified portfolio performance

Permitting & regulatory approvals

Data support for TSO requests
Active role in defining
the regulatory market frame

Financing & partnerships

Integrated ecosystem
(EPC, knowledge sharing)
Intro to financial parties
(banks and investors)
Tailored revenue models
Market-approved terms
and conditions

Maximum revenue

Operations & maintenance

Live dashboard
Regular client updates
Degradation-informed optimization
Optimized maintenance planning

Testing & commissioning

Seamless onboarding
Prequalification
Testing

Design & procurement

Warranty terms & restrictions
Simulation dashboards
Dedicated backtests

Customer spotlights



Largest operational grid-scale BESS in DE



Bringing BESS optimization to Greece; 270 MW portfolio



First 4-hour BESS in the Netherlands



First UK project deployed in Germany



Largest grid-scale BESS in Bavaria, Germany



Largest grid-scale BESS financed in Germany

JENBACHER



ENERGINET

SUNGROW



Trina solar

FLUENCE
A Siemens and AES Company



Partner spotlights





Algo trading vs.
manual trading



Battery dimensioning &
performance warranties:
Lessons learnt



Commercial model



Transparency



Algo trading vs. traditional trading

Algo trading vs traditional trading

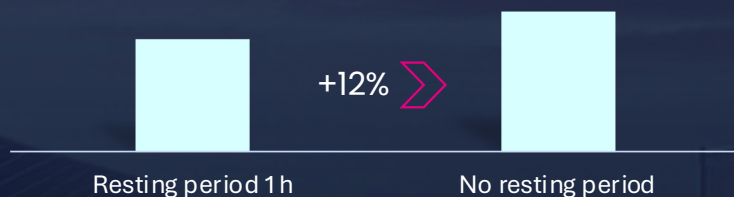


Aspect	Traditional trading	AI-based algorithmic trading
Decision-making	Manual, based on human expertise and predefined rules	AI-driven, data-based, continuously optimized
Execution speed	Slow, human-dependent	Milliseconds, fully automated
Data processing	Limited to historical data and basic trends	Real-time analysis of multiple data sources (market trends, weather, demand, etc.)
Market adaptability	Reactive, slower response to sudden changes	Proactive, self-learning models adjust dynamically
Risk management	Rule-based, predefined thresholds	Predictive analytics for dynamic risk mitigation
Trading strategies	Static, limited flexibility	Dynamic, self-optimizing strategies
BESS optimization	Fixed charging/discharging schedules	AI-driven real-time adjustments for maximum profitability
Revenue potential	Limited by human constraints	Maximized through AI-driven efficiency
Regulatory compliance	Manual tracking of market regulations	AI can automate compliance monitoring and adjustments

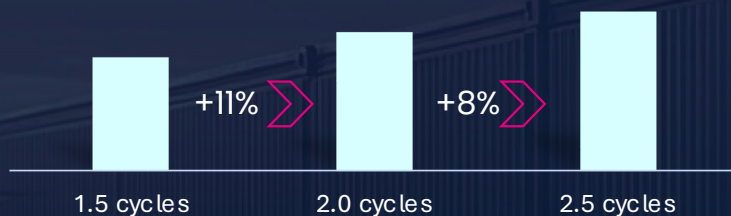
Battery dimensioning

BESS performance warranties and their impact on revenues

Resting period



#Average cycles/day



Available SoC range



% RTE



EUR/MW/Year

Impact of warranty conditions on revenues

Other examples together with cycles and duration

89% RTE
95% usable SoC
1.8 cycles average
97% availability

260k EUR/MW/Year

+11.5%

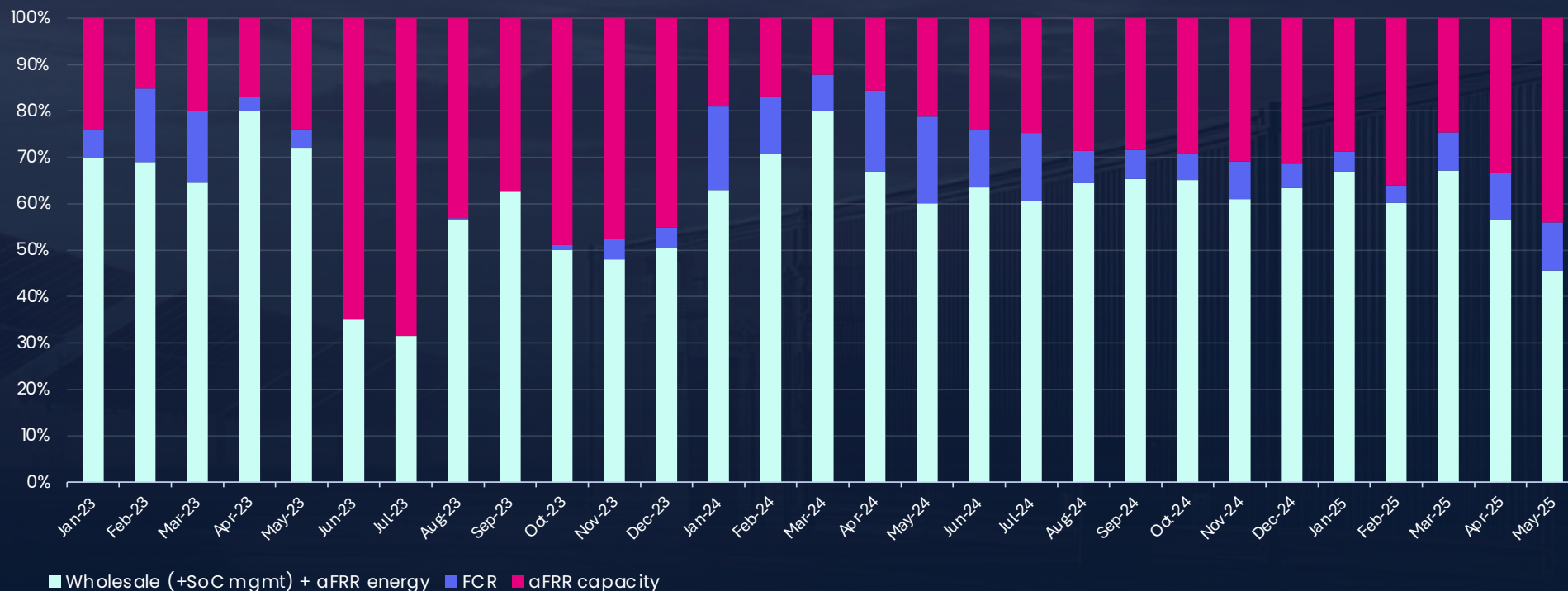
90% RTE
100% usable SoC
2 cycles average
99% availability

290k EUR/MW/Year

e.g. **50 MW/100 MWh BESS**
1.5 mio. EUR/Year
15 mio. EUR over **10-year** period

Experiences from the German market

Evolution of revenues for a 10 MW/20 MWh with maximum 2 cycles per day



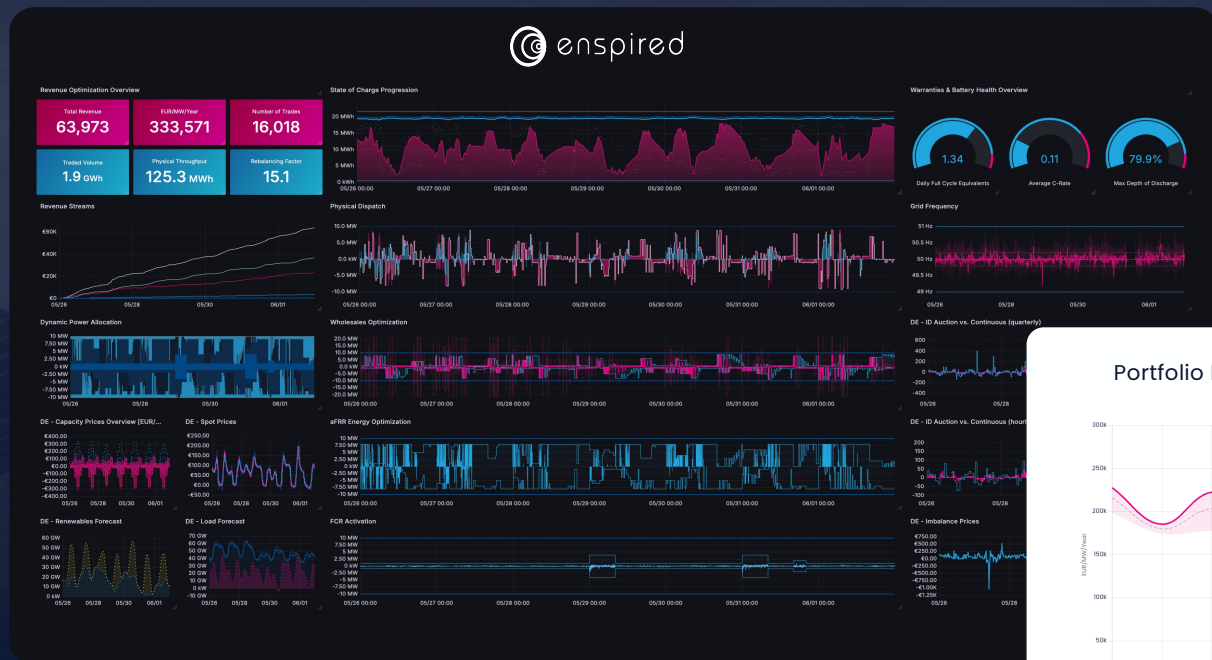
Commercial models

Tailored revenue models

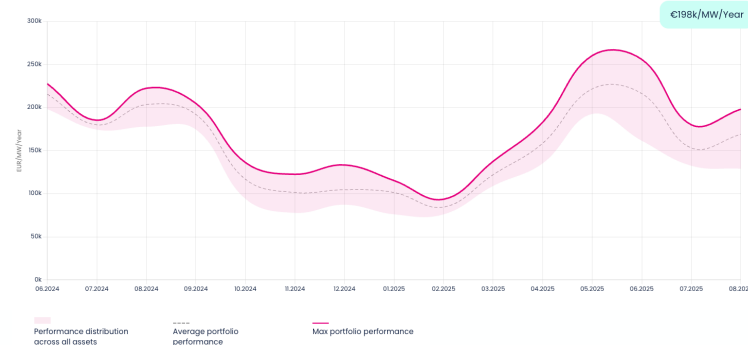
	Fully merchant	Merchant with floor	Merchant with cap & floor	Tolling
	Allows to fully capture upside and maximize project return	Allows full upside participation with downside protection	Allows efficient upside participation with downside protection	Provides guaranteed and plannable revenues for stable project returns
Transparency	Full transparency	Full transparency	Full transparency	✓
Downside protection	✓	Floor	Floor	Full
Upside potential	Unlimited	Unlimited	Capped	✓
Guarantee provision	✓	Revenue share about floor	Optimized revenue share between floor and cap	Included
Optimization fee	Share from total revenue	Share from total revenue	Revenue share up to cap	Included

Transparency

Full transparency for asset owners



Portfolio Performance





Certified
portfolio
performance



Degradation-
informed
optimization



Optimized
maintenance
planning



Tailored
revenue
models



Proprietary
optimization
platform



Full transparency
on asset
performance



Got a question?
Talk to our BESS expert!

Onofrio Belviso

onofrio.belviso@enspired-trading.com
+43 664 1275 041

Learn more

Cross-market optimization

BESS revenues in Europe